

BELLYACRESTUDIOS LLC



Install and care of your Fiero tail light lens covers

How to easily replace your new lens covers



31-0003

Restoration Parts

The GM RESTORATION PARTS emblem is a trademark of General Motor Corp. licensed by BellyAcre Studios, LLC

Keith Goodyear

1/4/2020

This document explains our quality assurance and return policy and step by step procedure to replace your tail light lens assembly. Always be sure to not lay the lenses on their face where they may get scratched.

INSTALL AND CARE OF YOUR NEW FIERO GT TAIL LIGHT LENSES

Quality Assurance Overview

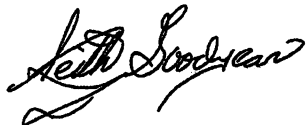
BellyAcreStudios endeavors to manufacture the best lenses and remain affordable to Fiero GT owners while remaining true to quality standards set forth by the our license with General Motors.

My team and I have contrived some creative solutions to make this complicated product feasible and affordable. With this in mind, this process of a limited run production of such a large clear part makes it difficult to produce a flawless part.

While examining your new lenses, please realize minor anomalies can occur during the production processes. These do not affect the overall function or appearance of these much needed lenses.

Toward the end of these instructions we included some recommendations to maintain the clarity and beauty of your new lenses.

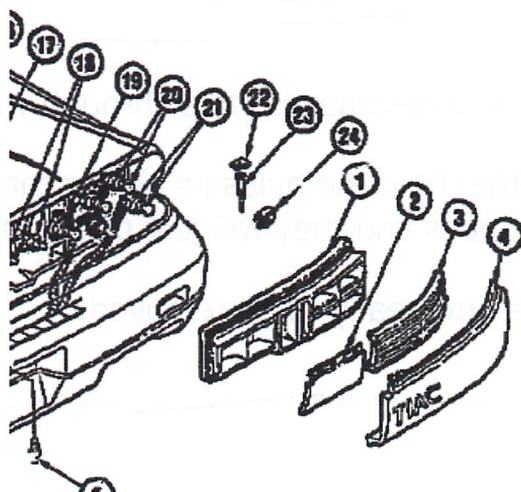
Feel free to contact us directly to discuss any concerns you may have your new Fiero GT tail lights. We always appreciate your feedback.



INSTALL AND CARE OF YOUR NEW FIERO GT TAIL LIGHT LENSES

Carefully remove your new lenses from the protective bags. Have a soft clean surface to lay them on. Avoid setting them on the front surface as this could cause scratching. Check over your lenses for damage they may have received during shipping. If you should find damage contact us at George@bellyacrestudios.com.

The installation of your new lens covers is going to require the removal of the turn signal assembly.



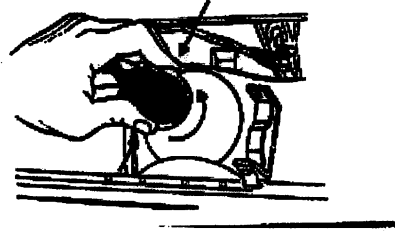
(item #22 and #23)

There are three caps (#22) on each lens assembly that cover the screws that hold the complete tail light assembly in place. Using a prying tool, carefully pop these rectangular covers loose and set them aside. This will expose the three screws (#23) that hold the assembly in place. Use a Phillips screwdriver and remove these fasteners.

Carefully pull the assembly from the car body and prepare to remove the light socket assemblies. One might find it helpful to label the light assemblies before removal. There are a total of seven light assemblies that need to be

INSTALL AND CARE OF YOUR NEW FIERO GT TAIL LIGHT LENSES

removed. Pinching the three clips around the assembly rotate them counter clockwise as indicated below. Mark each socket with a number and place the same number near the socket hole. This insures the right socket gets replaced into the right socket hole.



Do this with all five light bulb assemblies (#19 through #21).

Next are the assemblies that hold the bulbs (#18) for the decoration. This you can just rotate 90 degrees and they will just pop right out.

Your tail light assembly is now ready to be removed.

INSTALL AND CARE OF YOUR NEW FIERO GT TAIL LIGHT LENSES

First, it is necessary to remove the old lenses from your Fiero light reflector component. There are three tabs on the tail light assembly attached to the reflective component.



Tabs and pins for holding lenses to reflective light housing.

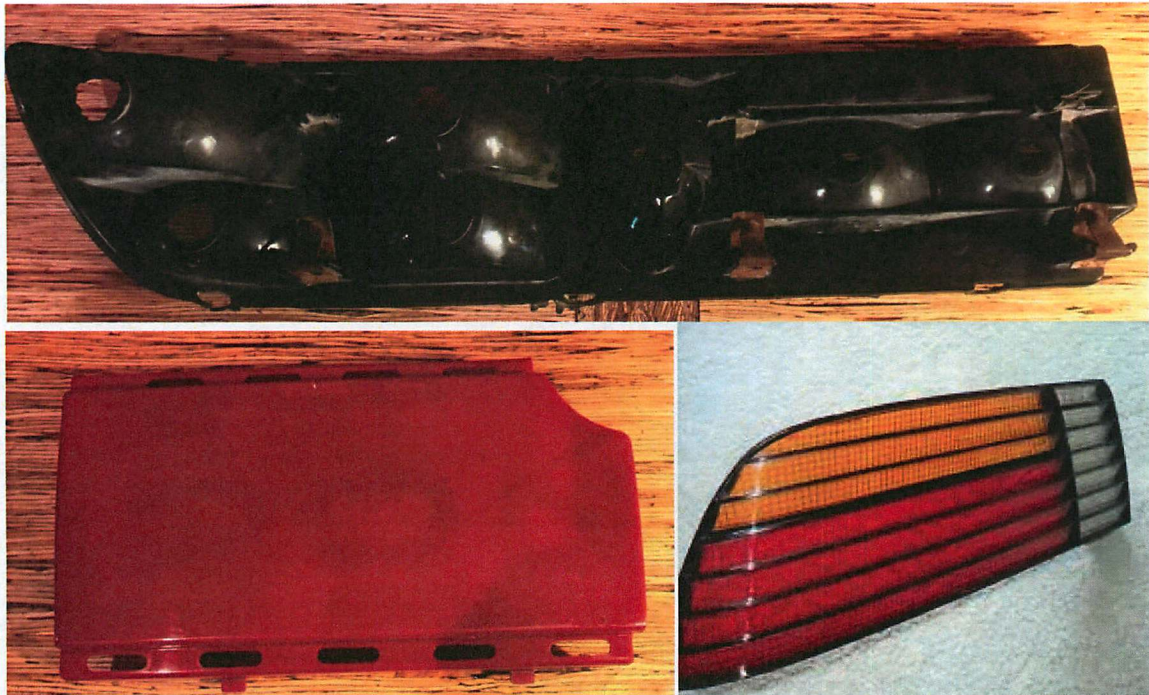
Very carefully, use a prying tool and lift these tabs up and over the clips sticking up on the lens itself. With the age of the reflective component these clips can be *very* fragile and can break. Once broken, one may have to replace the reflective component with a salvaged one.

There are also three tabs on the bottom of the lens. Release these tabs as well. Carefully remove the old lens housing from the reflector component taking care not to get the old sealant on the other parts of the assembly.

There may be some resistance when removing the old lens. There is old sealant that, while not hard, will require you to carefully separate the old lens from the sealant. Remove the lens from the reflective light assembly carefully.

INSTALL AND CARE OF YOUR NEW FIERO GT TAIL LIGHT LENSES

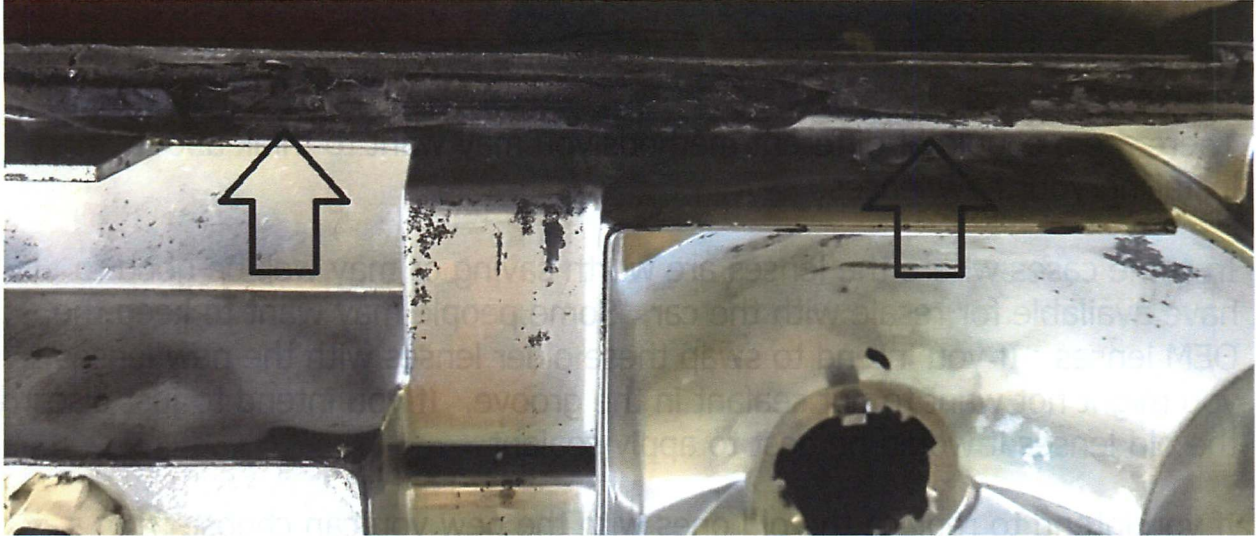
Once the lens is removed from the reflector housing remove the Fresnel lens (#2) from the old lens housing along with the opaque red panel (#3).



Reflective light assembly, red opaque panel and Fresnel lens

Using a soft brush and hot soapy water clean the surfaces of the reflective panel, the Fresnel lens and the red opaque panel. Rinse thoroughly and dry all surfaces.

INSTALL AND CARE OF YOUR NEW FIERO GT TAIL LIGHT LENSES



You must remove the old sealant from the groove in the reflective component. Carefully use narrow common slot screwdriver to slide through the groove pulling out the old sealant. In some cases you may pull some of the chrome plating from the black plastic housing. This is not a problem.



This picture shows the groove with the old sealant removed. The black is where the adhesive pulled the chrome plating from the black plastic housing.

INSTALL AND CARE OF YOUR NEW FIERO GT TAIL LIGHT LENSES

There are a couple of different methods you may want to think about when installing your new lenses.

In some cases where the lenses are worth saving or may well be good to have available for resale with the car. Some people may want to keep the OEM lenses. If you intend to swap these older lenses with the new lenses you might not want to put sealant in the groove. If you intend to just discard the old lenses it would be best to apply sealant.

If you intend to replace the old ones with the new you can choose from a couple of different kinds of sealant. Some comes as a rope and the other in a tube. *Don't use any sealant that will harden.* You want a sealant that will stay soft. This method is best as it seals the lens from any moisture.

Place the sealant in the groove around the perimeter of the light reflector assembly. Next, place the Fresnel lens and the red opaque panel into the new lenses covers. Carefully, place the assembly back into the reflector assembly and make sure the clips secure the new clear lens in place. Carefully remove any sealant that may have squeezed out of the groove.

Replace the tail light components into the assembly in the reverse order you removed them. Secure the screws to hold the lens in place and replace the screw access covers.

INSTALL AND CARE OF YOUR NEW FIERO GT TAIL LIGHT LENSES

Care and cleaning your lenses

REF: <https://www.acplasticsinc.com/informationcenter/r/polycarbonate-sheets-cleaning-care>

"For proper cleaning and care of your [lenses], we recommend Novus #1 cleaner and a soft cloth. The first step to cleaning your [lens] is to remove all the dust and dirt from it. In order to do this, you can either blow the debris off the [lens] or use water and a soft cloth to float the debris off. After [removing] the debris from your [lens] ... clean it with a recommended cleaner such as Novus #1. [...]

[N]ever use any kind of cleaners containing ammonia. This [will] cause damage to your [lens] and tarnish the look of it. Popular household cleaners such as Windex or 409 will cause damage to the [lens] and should never be used as a substitute for a proper cleaner. It is also imperative you never use a dry cloth or your hand to wipe [your lens] clean. Using a dry cloth to clean your polycarbonate will rub the dirt and dust into your [lens] scratching or causing damage to it."

We recommend these products that include *single use* microfiber wipes.



INSTALL AND CARE OF YOUR NEW FIERO GT TAIL LIGHT LENSES

Return Policy

Contact to arrange for a return or exchange.

Finished decorated parts may have slight imperfections associated with manufacturing and not subject to returns.

A 30 day return policy is provided from date of purchase stated on your receipt. The product must be repacked in the same condition received and undamaged.

Once returned lenses are received, our team will inspect them and determine if they are eligible for refund. Once a refund is approved, funds will be returned by the payment method used for the initial purchase. Credit card refunds may take 5 to 10 business days for funds to show up on your bank card statement.

BellyAcres Studios LLC reserves the right to refuse any returned parts we find have been damaged by means of incorrect installation, used improperly or damaged by external sources. Any returned lenses with signs of damage caused by end user or are beyond the 30 days warrantee will not be accepted.